



CHECK OUT 'MY ENERGY TOOLS'

Whether or not you have a smart meter, access My Energy Tools to find energy-savings tips. Compare your energy use with your neighbors. Create a personal energy-savings plan. It's simple, and it's free.



1. If you haven't yet, simply create a free ComEd online account at ComEd.com/MyEnergyTools. Have your account number handy.
2. Create a username and password.
3. From the MyAccount home page, choose Use My Energy Tools from the My Usage tab.

Once you receive a smart meter, you'll have access to even more energy-saving features and information through My Energy Tools.

For more information, visit ComEd.com/SmartGrid

SMART METERS

Empowering you to save energy and money.



ComEd is powering lives by modernizing the northern Illinois electric system to provide you with a stronger, more reliable smart grid. Smart meters are a key part of this effort and will empower you to better manage your energy use and costs.



An Exelon Company

powering lives



An Exelon Company

powering lives

WHAT ARE SMART METERS?

Smart meters are digital electric meters that use two-way communications to collect usage information and send it to ComEd through a wireless connection. Smart meters are a key part of ComEd's effort to modernize the electric system and provide you with better service and a stronger, more reliable smart grid.

ComEd plans to install approximately 4 million smart meters in all homes and businesses across its service territory. The installation of these meters is expected to be complete by 2021. ComEd will notify you in advance when it plans to install smart meters in your community.



GREATER CONTROL OVER YOUR ENERGY USE

Smart meters provide you with more information on your energy use and access to online energy-management tools. This enables you to monitor your consumption habits and make changes that can help conserve energy and reduce your costs.

MORE OPTIONS, MORE SAVINGS FOR YOU

Once a smart meter is installed, you can take advantage of special pricing options that reward you for voluntarily reducing consumption during designated peak usage times.

At any time, you also can participate in ComEd's Residential Real-Time Pricing (RRTP) program, which lets you pay a rate based on hourly, wholesale prices for electricity. You can manage your costs by shifting some of your electricity use to times when the price of electricity is lower.

IMPROVED SERVICE

A smart meter records electricity usage hourly and sends it to ComEd through a wireless connection. This provides you with timely access to usage information, while helping to eliminate estimated bills and the need for a meter reader to come to your property.

COST SAVINGS PASSED ONTO YOU

Smart meters provide more efficient utility operations—including detection of meter tampering and theft, as well as faster new service connection/disconnection when customers move in and move out. The result is cost savings that are passed on to you.

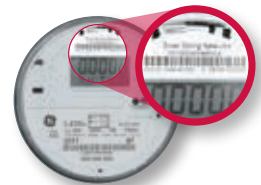
SHORTER OUTAGES

Smart meters are an important part of a modernized electric grid that, when complete, can notify ComEd when an outage occurs and when power is restored. This leads to quicker response times and more efficient outage restoration.

HOW DO I KNOW IF I HAVE A SMART METER?

Look on your ComEd bill.

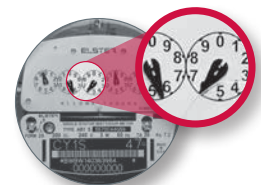
You have a smart meter if the meter number has nine digits and begins with a "2." (See the "Meter Information" box near the top of your bill.)



Check the meter installed on your home.

SMART METER

Smart meters are affixed with a Silver Spring sticker at the top of the face of the meter.



ANALOG METER

Smart meters do not have moving dials.